

W2 Waterdrive

Riga February 2020

Water driven rural development in the Baltic Sea Region

Reduce nutrient loadings from agricultural landscapes in a context of ecosystem productivity and resource efficient growth considering climate change.

STØTTET AF

Promilleafgiftsfonden for landbrug

Activity Group 2.1 Cross-sector local participation

Learning from **FOCUS GROUPS + SUCCESS-STORIES + CASE AREAS**



FOCUS GROUPS MEETINGS



ACTION – AND INVESTMENT PLANS

based on **real** experience from case areas with **real** landowners



Recommendations and strategies to be incorporated I Waterdrive

2019

2020

2020/2021

WP2 activity Group 2.1 Cross-sector local participation **FOCUS GROUPS in the case area/areas in 2020**

Working with the farmers union, farmers, the advisory service, the municipality and other stakeholders



Farmers Union, the advisory service, catchment officer, the municipality and SEGES



Farmers, Farmers Union, the advisory service municipality, catchment officer and SEGES

A MUST

Minutes from FOCUS GROUP MEETINGS

Template Focus groups in Waterdrive
- results and learning experiences

Remember always pictures from your meetings
to make our communication more alive



<COUNTRY>

Main results of the focus groups in case area <name>
Summary (short description)

Main tasks/goals of the focus groups

Strategic planning of focus groups (what to do when and how?)

Focus group meeting 1

Minutes/resume of meeting

- The main purpose of the meeting
- Participants (at least the stakeholder categories)
- Main inputs made for the future work in the case area (minutes and resume of meeting)
- What we learned from the focus groups meeting
 - What worked great?
 - What might be improved at the next meeting (content, format, facilitation, etc)?
 - Special needs?
- Possible actions and improvements before and during next meeting

Focus group meeting 2



Byggeri Energi Fjerkræ Får Heste IT Jura Kvæg Ledelse Maskiner Miljø Planteavl Rådgivning Svin Tværfag

Miljø, klima og natur

Ammoniak og lugt

Grundvand

Klima

Miljøgodkendelse

Miljøtiltag

Målrettede virkemidler og regulering

Natur- og arealforvaltning

Natura 2000

Pesticider i miljøet

Projekter

Udvaskningsforsøg

Vandplaner

Vådområder

Du er her: LandbrugsInfo > Miljø, klima og natur > Projekter > Focus groups

Oprettet: 09-04-2019

Focus groups

Focus groups in the partner countries.

[Denmark](#)

Estonia

[Finland](#)

Germany

Latvia

Lithuania

[Poland](#)

Russia

Sweden



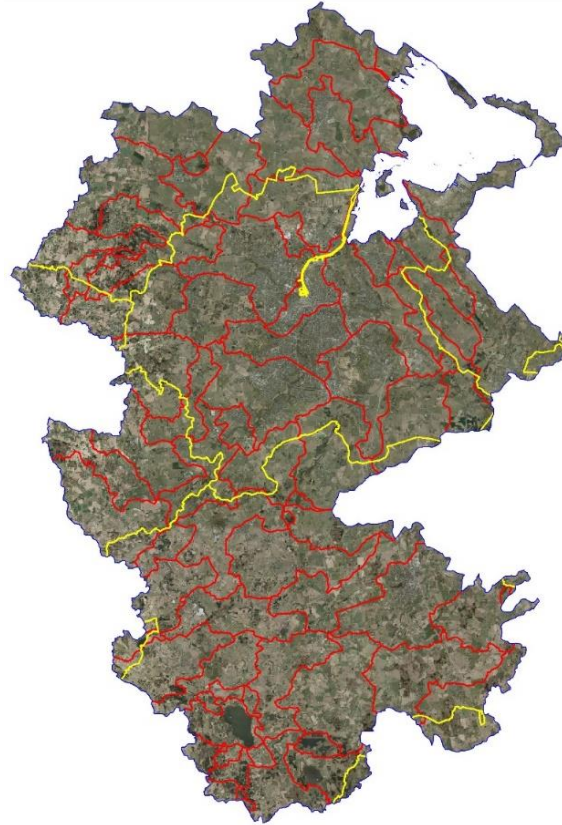
Sidst bekræftet: 09-04-2019 Oprettet: 09-04-2019 Revideret: 09-04-2019

Investmentplans – effect - costs

Odense Fjord catchment



ID 15 – red borders



**Reduction target 549,300 kg/
63,960 hectare agricultural area**
Reduction of 8,6 kg N/ha

ID 15 = 1,500 hectare * 8.5 = 12,750 kg N

Potential 11.500 ha clay soils with constructed wetlands CW

Fyn

The target is reduction of 187.100 kg N with CW

850 Constructed wetlands in total on Fyn

425 Constructed wetlands in the Waterdrive case area.

Calculated effect of drainage measures

Effekt af virkemidler på oplandsniveau

Reduction

ID15-nummer		42.320.719	1135	ha	LOOP-opland		Fyn (lerjord)	
	Lodsejer	Virkemiddel	Dræno­pland ha	Omdrifts­procent %	Virkemiddel ha	Effekt kg N pr. ha virkemidde	Effekt af virkemiddel kg N	Effekt af virkemiddel kg P
1	Constructed wetland CW	Minivådområde	100	100	1	579,4	579	3,7 - 4,2
2	CW with woodchips	Minivådområde med filtermatrice	100	100	0.5	1158,7	579	0,0 - 0,0
3	Intelligent bufferzone	Intelligent bufferzone	10	100	0,07	579,4	41	0,4 - 0,4
4						0,0	0	0,0 - 0,0

Kg N/ha

Kg N

Kg P



Loftaån

- åtgärdsplan 2018-2021



Kommunstyrelsens förvaltning, Enheten för samhällsbyggnad
2018-09-30

ÅTGÄRDSBENÄMNING	ÅTGÄRDSTYP (VÄLJ)	ANTAL	ENHET (SCHABLON-N SCHABLON TOTAL RED-N (ITOTAL RED-P (GENOMFÖRANDEÅR				
Loftaån2: Strukturkalkning	Strukturkalkning	330 Hektar	0	0,15	0	49,5	2019
Loftaån2: Kalkfilterdiken	Kalkfilterdiken	35 Hektar	0	0,15	0	5,25	2019
Loftaån2: Minivåtmarker	Våtmark för näringsretention	5 Hektar	200	5	1000	25	2019
Markkartering- Loftaån 2	Anpassad stallgödselspridning	600 Hektar	0	0,15	0	90	2019
LONA08: Beslutade åtgärder - EFK Loftaån	Ekologiskt funktionella kantzoner	500 Meter	0,1	0,012	50	6	2020
LONA06: Beslutade åtgärder - Kalkfilterdike Loftaån	Kalkfilterdiken	50 Hektar	0	0,15	0	7,5	2020
LONA11: Beslutade åtgärder - Minivåtmarker/fosfordammar Loftaån 15 st	Våtmark - fosfordamm	3 Hektar	675	68	2025	204	2020
LONA07: Beslutade åtgärder - Skyddszoner vattendrag Loftaån	Skyddszoner i jordbruksmark	2,5 Hektar	0	0,1	0	0,25	2020
LONA10: Beslutade åtgärder - Tvåstegsdiken Loftaån	Tvåstegsdiken	500 Meter	0,1	0,012	50	6	2020
LONA09: Beslutade åtgärder - Små våtmarker/fofordammar Loftaån 5 st	Våtmark - fosfordamm	2 Hektar	675	68	1350	136	2020
LONA04a: Beslutade åtgärder - Markkartering Loftaån	Anpassad stallgödselspridning	500 Hektar	0	0,15	0	75	2020
LONA05a: Beslutade åtgärder - Strukturkalkning Loftaån	Strukturkalkning	250 Hektar	0	0,15	0	37,5	2020
Loftaån	Vasskörd	15 Hektar	100	9	1500	135	2018
Totalt					5975	777	

Costs?

RESPONSIBLE: Participatory toolbox

Lead: Uwe and Franziska Kruse

LLUR 60.000 Euro Uwe Rammert & Franziska Kruse

SBWA 30.000 Euro Matilda Valman

Output title:

Reaching further together - a cross-sector participatory toolbox for smarter water management in agricultural landscapes

RESPONSIBLE: Case areas, Focus Group meetings and minutes, investment plans

SEGES	114.000 Euro	Frank Bondgaard	Danish case
SJV	15.000 Euro	Emma Svensson	Swedish case
Västervik	30.000 Euro	Gun Svensson	Swedish case
Pro-Agria	25.000 Euro	Mikko Ortamala	Finnish case
BEF	50.000 Euro	Elvyra Miksyte	Lithuanian case
Jelgava	26.000 Euro	Ingars Rositis	Latvian case
CDR	20.000 Euro	Janusz Dabrowski	Polish case
ERCE	20.000 Euro	Katarzyna Izydorczyk	
PHENO	10.000 Euro	Maciej Kowalscyk	
Russia	?	Mikhail Ponomarev/Yulia Nikulina	
		Irina Popova	Russian case

Outputs:

Success-stories & experiences - done

Case area description - done

Templates with focus group meetings - minutes

Action and investment plans in the case area

Participatory toolbox

Activity Group 2.2 Leadership and coordination

WP2 meeting in Copenhagen 2019 about Leadership “Institutional structure” scale

Develop and test the participatory toolbox - Test in Riga February 2020 with stakeholders

BSR workshops on the role of leadership at international meetings - Meetings in Riga and Vilnius.

Supporting the development of new services and catchment officers.

Develop the leadership manual

RESPONSIBLE: Leadership manual

Lead Magnus Ljung

SLU	50.000 Euro	Magnus Ljung
SJV	1.9358 Euro	Emma Svensson
CDR	6.000 Euro	Janusz Dabrowski
LLUR	20.000 Euro	Uwe Rammert
SEGES	20.000 Euro	Flemming Gertz
NWRIAO		Mikhail Ponomarev/Yulia Nikulina
Guryevsk		Irina Popova

Output title:

Reaching further together - a cross-sector participatory toolbox for smarter water management in agricultural landscapes

Activity Group 2.3 New services for cross-sector implementation

Describe the need of **NEW SERVICES** to support cross-sector water management. Identify BSR/EU benchmarks and examples of new services

Catchment officers/ Agricultural advisory services is one of the solutions

- a. Workshops with representatives from agricultural advisory services
- b. Back-to-back with Waterdrive international
- c. Implement workshop on new services at the final Conference

Responsible for New services output

LEAD Flemming Gertz

SEGES	20.000 Euro	Flemming Gertz
CDR	20.000 Euro	Janusz Dabrowski
SBWA	10.000 Euro	Matilda Valman
NWRIAO		Mikhail Ponomarev/Yulia Nikulina
Guryevsk		Irina Popova

Output title:

New services for water management in agricultural landscapes - a catalogue of ideas and experiences

YOU MAKE THE CHANGE